

Pajarito Construction Activities

John Bretzke, Deputy Associate Director

Project Management & Site Services, LANL

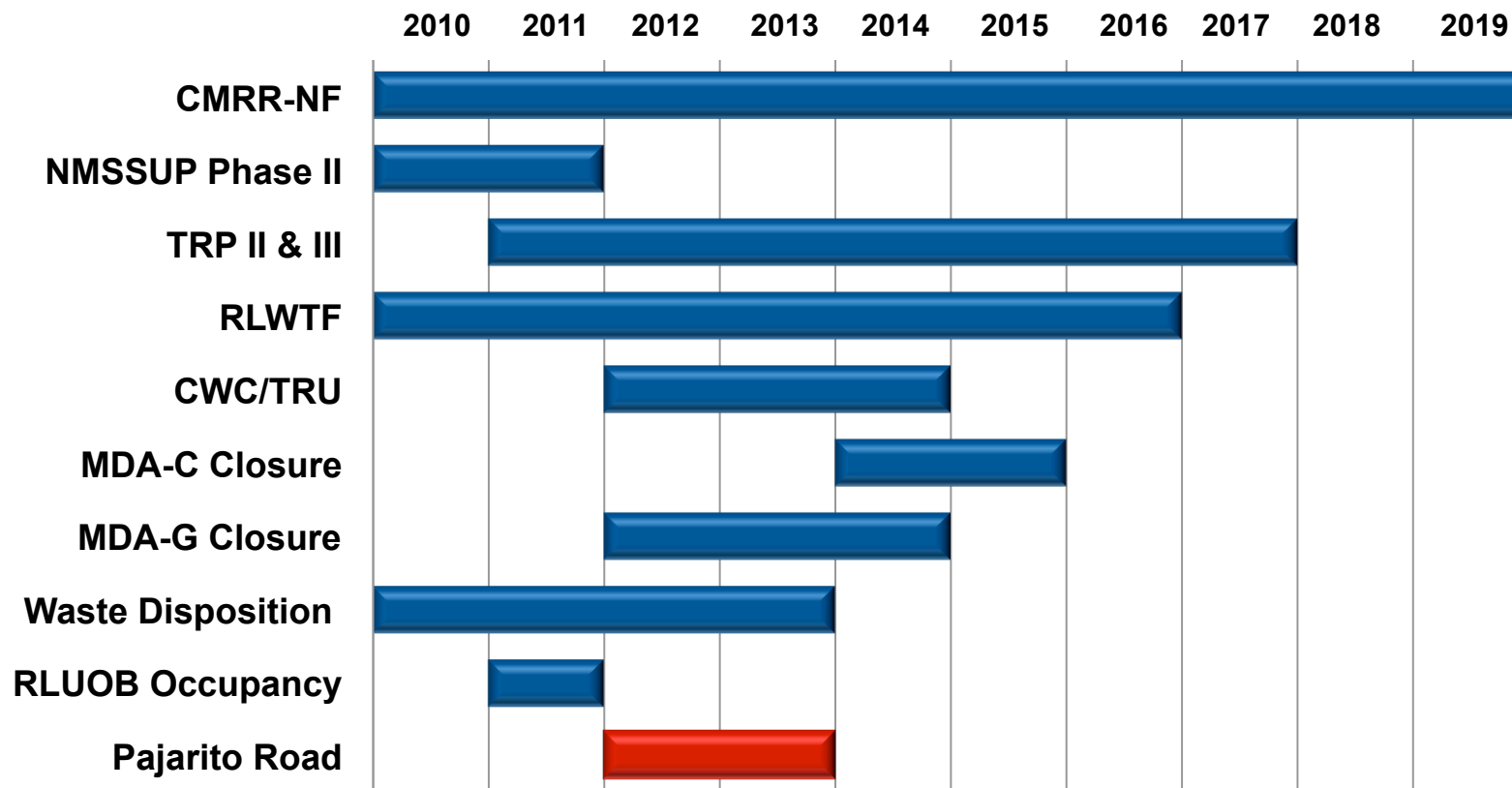
June 16, 2010

LA-UR-10-04023

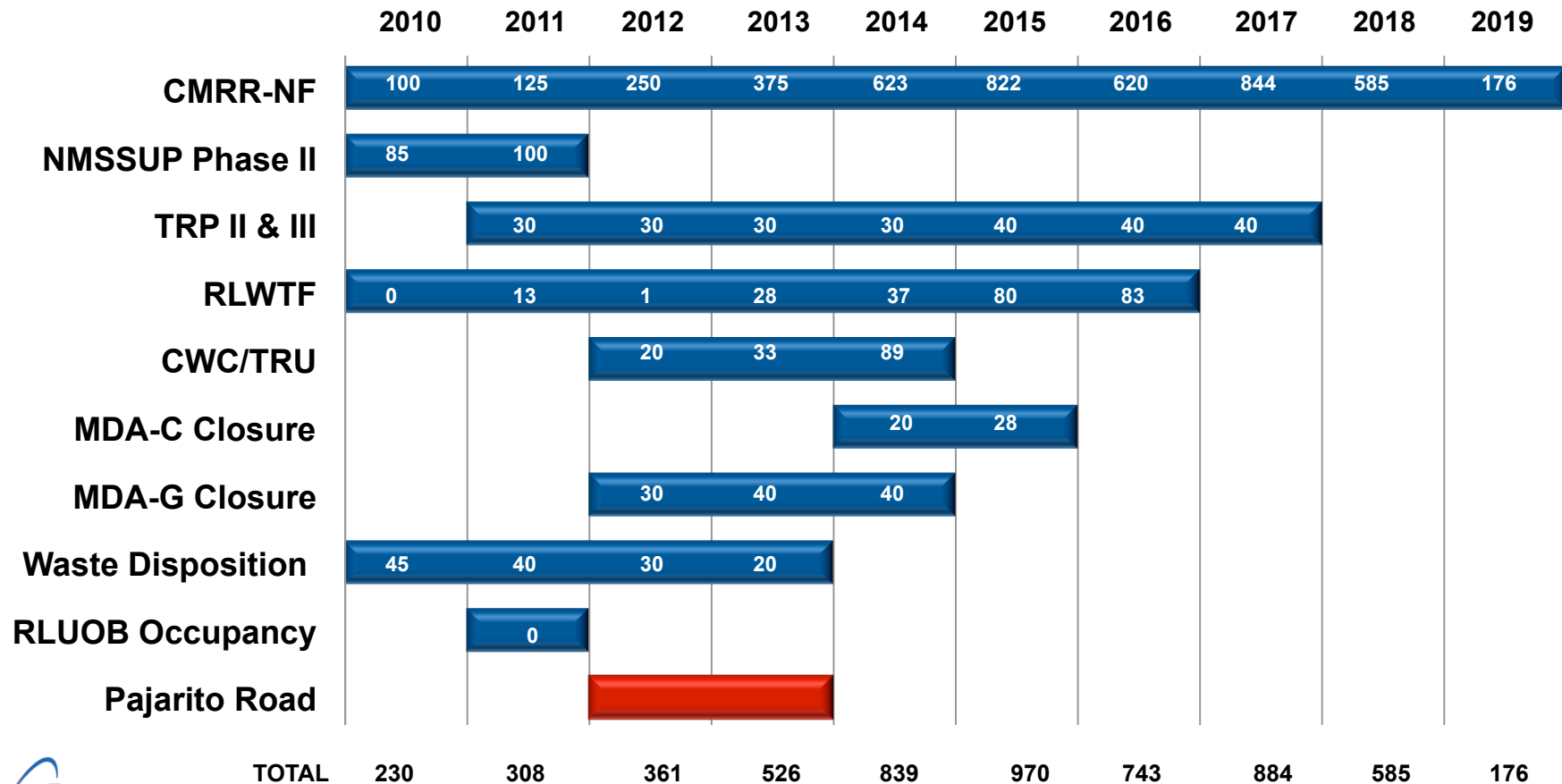
Construction Forum Objectives

- **Share/appraise the public about LANL planned schedule for construction projects along the Pajarito Corridor for the next ten years**
- **Share that the public understands constraints, which can change LANL's planning**
 - Federal budget process
- **Share LANL's challenges with implementing its planned construction program on the Pajarito Corridor**

Major Projects Near Concurrent Activities



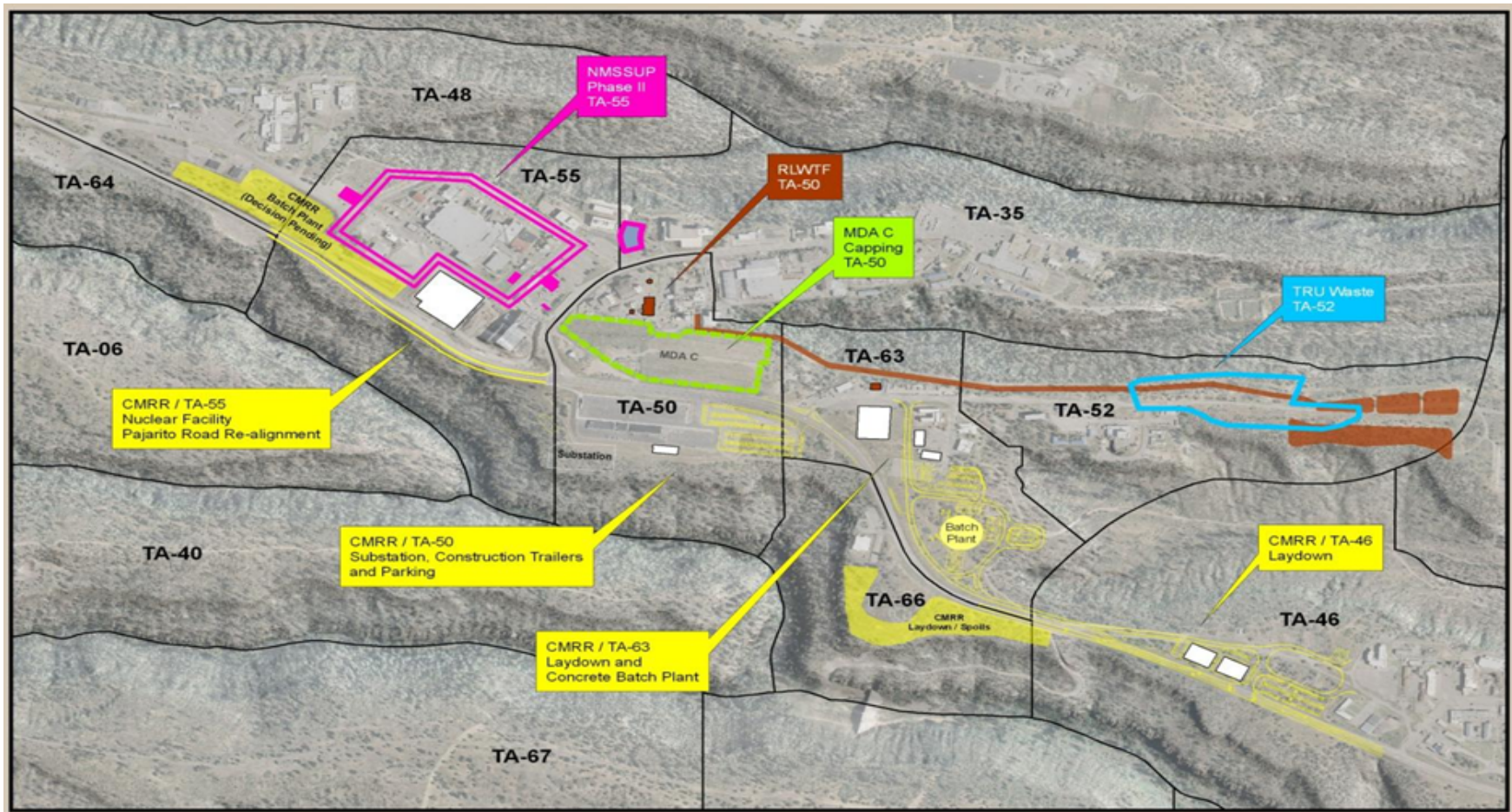
Project Construction Craft Personnel



Construction Personnel Projections

- **Peak construction crafts will exceed 900 in 2015**
- **Support services will be relatively constant over project at 150-200**
- **Engineering and design resources will be heaviest at the start of the project and will be mostly off-site**
- **Startup and operations personnel will be relatively small as compared to other resources and will reach a maximum of about 100 at the end of construction**

Construction Project Layout

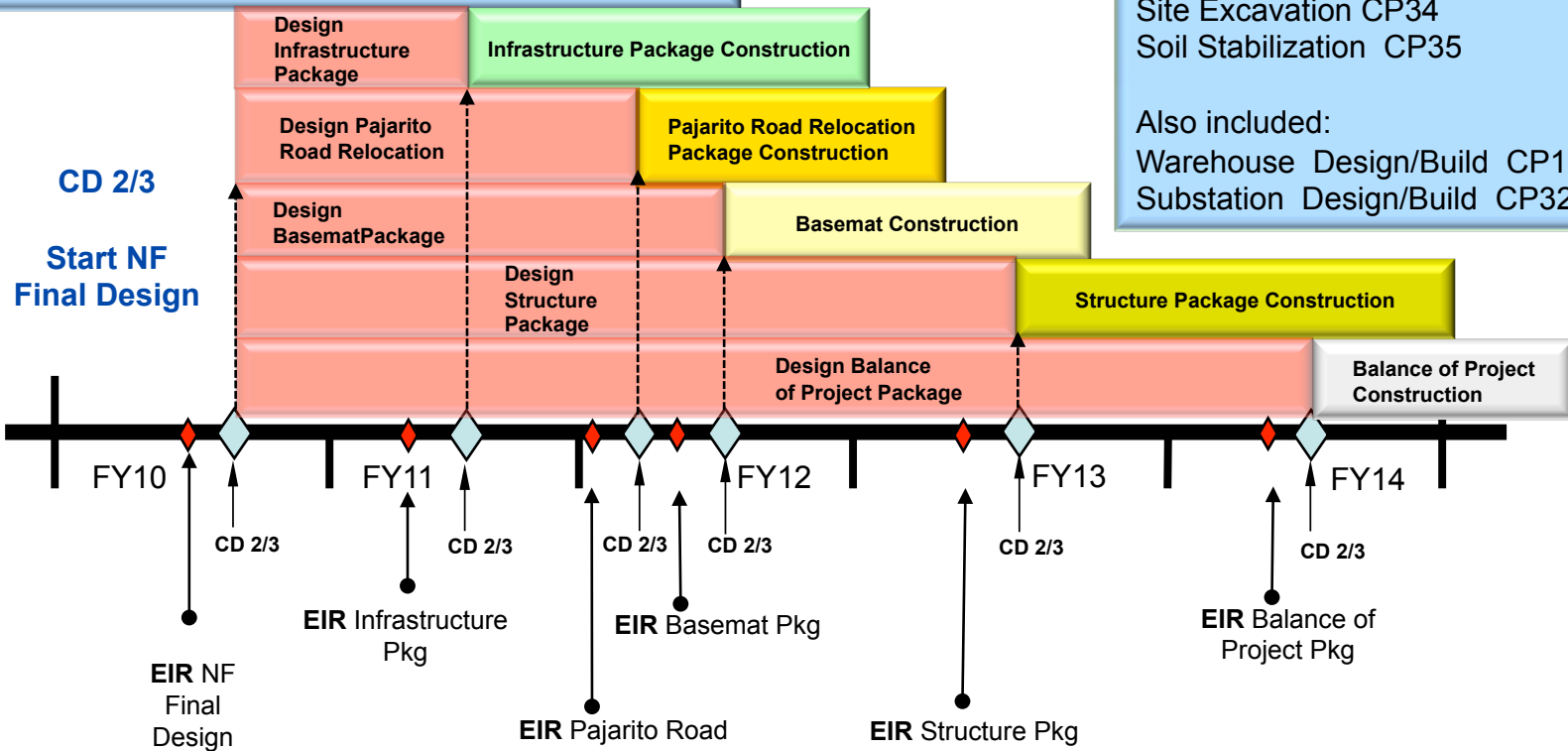


CMRR Nuclear Facility Baselines

CD-2/3 Infrastructure Pkg – March 2011
 CD-2/3 Pajarito Road Relocation Pkg – December 2011
 CD-2/3 Basemat Pkg – March 2012
 CD-2/3 Structure Pkg – March 2013
 CD-2/3 Balance of Project Pkg – March 2014

Infrastructure Package Includes:
 Batch Plant CP01
 Temporary Utilities CP02
 Site Preparation Laydown CP03
 Site Utility Relocation CP33
 Site Excavation CP34
 Soil Stabilization CP35

Also included:
 Warehouse Design/Build CP18
 Substation Design/Build CP32



Projected CMRR Procurement RFP Issue Dates

- **Temporary Utilities** –Mid 2011
- **NF Site Utilities Relocation** –Mid 2011
- **NF Site Excavation and Storm Pond** –Mid 2011
- **NF Construction Offices** –Mid 2011
- **Elevators** –Late 2011
- **Concrete Batch Plant** –Mid 2012
- **Site Preparation** –Early 2012
- **NF Warehouse Design/Build** –Mid 2012
- **NF Craft Building** –Mid 2012
- **NF Parking Lot** –Mid 2012
- **NF Pajarito Road Relocation** –Mid 2012

Studies

- **National Environmental Policy Act (NEPA)**
- **Utility planning**
- **Traffic studies**
- **Site selection for parking and truck inspection facilities**
- **Institutional impacts during construction**